

01	Message from the President	3
02	Gallery	4
03	2020 Beneficiaries of the MAD Foundation	6
04	Financial Report	10
05	MAD Foundation Volunteers	14
06	MAD Foundation Ambassadors	15
07	MAD Foundation Sponsors	16

A volunteer run organisation, MAD leads by example and encourages other people to make a difference in their community by coming together to help those less fortunate.

MAD simply can't do what it does without the expertise and wisdom of this magnificent team. Without you, we would be slow, bureaucratic and cumbersome! With you, we are direct and timely.

When MAD was first conceived almost 20 years ago, our goal was to Make A Difference in the wider community, with compassion and connection at the heart of our purpose. As the years have rolled on, the WHY we do this has never changed, but who MAD contributes to and how that happens has; in a way that none of us ever envisaged.

To help you put into perspective how the support you have provided over the years does Make A Difference in the life of a child or young adult ...

Think back to getting up this morning – you sat up, got out of bed, walked to the bathroom, showered, brushed your teeth, got dressed, then it was time for breakfast, coffee and reading the paper – all activities of daily living that we take for granted to complete independently, day in day out. This is not the case for those Australians living with a disability.

These tasks often require the use of expensive equipment, home modifications, ongoing therapy and treatment plus

carer support. These activities are basic human NEEDS, not WANTS. And for those who require equipment, services, therapy and support, they are also expensive.

As Susie Gibb, a paediatrician at the Royal Children's Hospital said so eloquently at our annual morning tea

"MAD Foundation is an amazing organization really making a difference to some of the most vulnerable children in our community. Our patients have high equipment needs that sometimes arise unpredictably or change as children grow, their needs vary and sometimes mainstream systems such as the NDIS cannot respond in a timely enough manner".

Over the past 12 months MAD helped meet the NEEDS of 26 families, taking the total to more than 300 and over \$1.7m in direct support provided.

The key enabler for MAD to achieve this is through long-term relationships with a trusted referral network, primarily within the Royal Children's Hospital. MAD simply can't do what it does

without the expertise and wisdom of this magnificent team. Without you, we would be slow, bureaucratic and cumbersome! With you, we are direct and timely.

As Susie Gibb goes onto say

“So often it feels like there are barriers to funding at every turn but I have never experienced this when approaching MAD.

It is a true partnership in which clinicians and the Foundation work together to address critical needs. MAD is a very special organization helping children families whose needs cannot wait”.

MAD cannot function without the support of our major partners The Knight, Morgans, Australian Paper Recovery, Bunnings, Cisco, John Beever Australia, Marsh, Veolia, Agilent, Connors Sports Management, Four Pillars, Sorted Services, Ron Evans Foundation and Kustom Cruisers. It is not only their significant financial contribution, but also the efforts and engagement of their staff that continue to drive MAD forward.

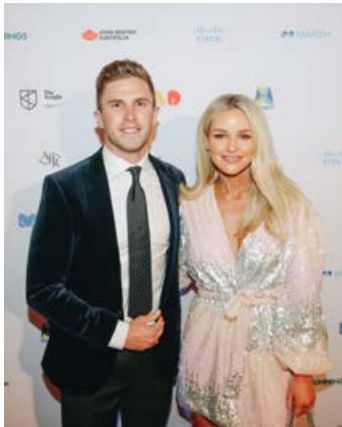
MAD will continue to operate on 100% voluntary basis, with no salaries, no paid offices, no overheads and lowest admin costs possible. To achieve that MAD depends on the goodwill and support of many and we are lucky to have such amazing people alongside us. Only with you by our side is MAD able to do what is does the WAY it needs to be done.

Finally, a huge thank you to MAD’s Board members, organising committees, supporters, donors, ambassadors and most importantly the carers, therapists, doctors and specialists at Royal Children’s Hospital. And of course we give our appreciation and admiration to our beneficiaries and their families; you continue to inspire us to work to connect people together so that we can continue to make a difference.



Damian Toohey
President









“Changing the lives of disabled and disadvantaged children and young people by funding life-changing support equipment and services.”

In 2020 the MAD Foundation assisted 26 families with equipment and services to the value of \$170,308

Noah was referred by Eastern Health and received \$12,640 support for a Verve Stroller, seat and grasp bar accessories and Floor Sitter Seat

Jasveya was referred by Yooralla and received \$2,820 support for a Push Chair and Go To Postural Support Seat

Ansh was referred by RCH and received \$942 support for a Wheelchair, Bed stick, Bath Transfer Bench and Shower hose

Jahleel was referred by RCH and received \$8,574 support for a Hospital Bed and Air Mattress 6 month hire

Aarohi was referred by RCH and received \$14,158 support for a Specialised stroller

Alice was referred by RCH and received \$7,304 support for a Bath Chair and Seating System

Hussain-Yar was referred by RCH VPRS and received \$23,066 support for a Wheelchair, Sling and Flamingo Bath Seat

Tyson was referred by RCH and received \$5,162 support for a Ceiling Hoist Tracking and Installation

Aleacia was referred by RCH and received \$2,418 support for a Transfer Board and Shift Transfer Assist Trolley

Jack was referred by VPRS Eastern Health and received \$14,700 support for a Multistander, Bath Seat and Lecky Squiggle Seat

Lily was referred by RCH and received \$3,917 support for a Convaid Cruiser

Kaleisi was referred by RCH and received \$1,992 support for a Second Skin

Jaxon was referred by RCH and received \$3,808 support for a Pressure Cushion, Transfer Board, Hire of wheelchair, air mattress, ramp, commode and transfer bench

The RCH Therapist team received \$1,926 support for Therapy Toys

Hudson was referred by RCH and received \$2,939 support for a Tumble Form and Wedge 12 wk hire, Jenx Corner Seat, Car Seat, Lecky Activity System

Dash was referred by VPRS Eastern Health and received

\$89 support for a Reclining Booster seat

Grace was referred by Noah's Ark and received \$6,184 support for a Bingo Seat

Reza was referred by RCH and received \$1,086 support for a Wheelchair and cushion 16 week hire

Zoe was referred by RCH and received \$3,413 support for a Macey Walker

Amteshvar was referred by RCH and received \$2,817 support for a Gutter Frame and Physiotherapy (10 sessions)

Obed was referred by RCH and received \$6,710 support for a Wheelchair, Crutches and Shower Chair

Jake was referred by RCH and received \$1,029 support for an iPad and SIM

Ezra was referred by Nexus Primary Health and received \$28,172 support for a Wheelchair

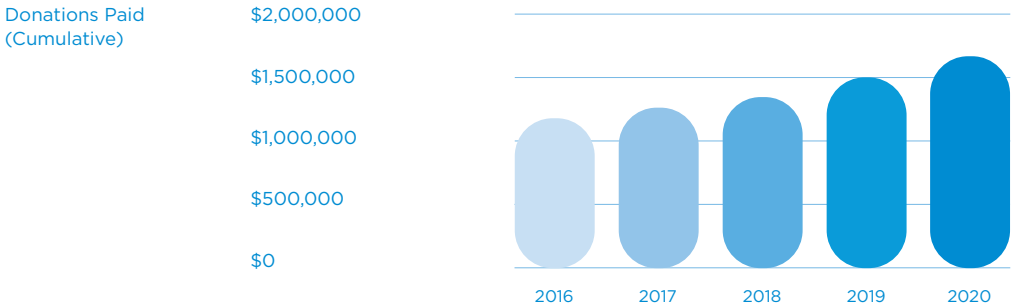
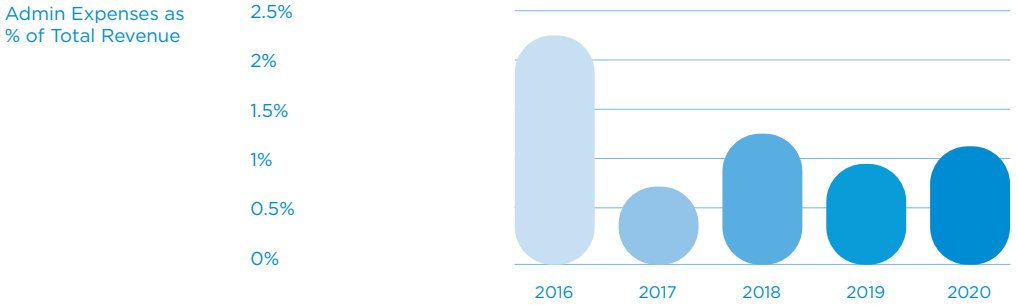
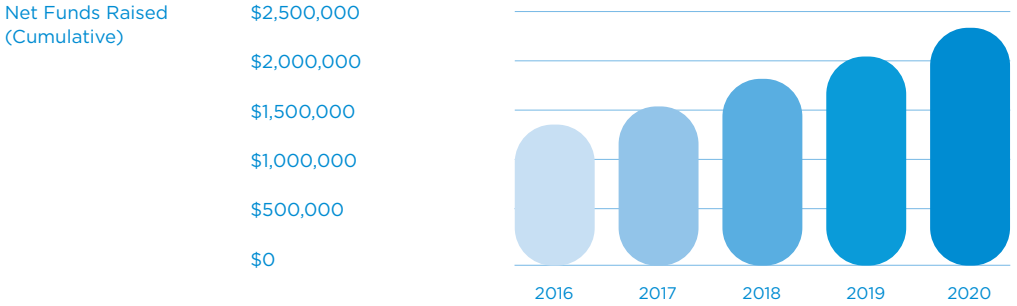
Cove was referred by Noah's Ark and received \$7,389 support for a Lecky MyWay Walker

Siris was referred by RCH and received \$7,056 support for a specialised Car Seat

In Financial Year 2020 the MAD Foundation raised \$248,906 net of event and admin expenses and paid out a total of \$170,308 (68%) in support of beneficiaries, retaining a surplus of \$536,872 for the future support of MAD beneficiaries.

This year MAD paid a total of \$170,308 in support of disabled and disadvantaged children and young people in need.

\$170,
308



Total Revenue	356,178
Event Expenses	103,205
Admin Expenses	4,068
Net Funds Raised	248,906
Donations Paid	170,308
Opening Cash Balance	458,274
Surplus for the Year	78,598
Closing Cash Balance	536,872

1%

ADMIN EXPENSES AS % OF TOTAL REVENUE

29%

FUNDRAISING COSTS AS % OF TOTAL REVENUE

70%

NET FUNDS RAISED AS % OF TOTAL REVENUE

68%

DONATIONS PAID AS % OF NET FUNDS RAISED

Board

Andrea Boal Beneficiary Liaison
David Francis Director
Elizabeth Priddle Secretary
Chris Steiger Treasurer
Michael Thorn Vice President
Damian Toohey President

#MADBall Committee

Fiona Doyle
Gilly Lechte

Communications Team

Charlie Francis

Brand Guardians

Pop & Pac

Typesetting

thesqueezebox.com.au

Printing

Blueprint

Ambassadors

Laura Cooke

Michael Hurley

Chris and Sean Lynch

Marc and Jessie Murphy

Jason Richardson

Sponsors Platinum



Sponsors Gold



Major Contributors



Ron Evans Foundation

